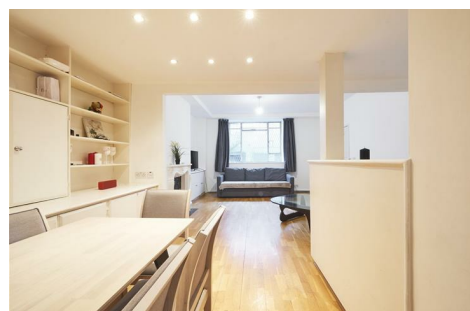


Gloucester Terrace, W2 3DA

£2,800 PCM



A bright and spacious two-bedroom apartment set on the lower ground floor of a beautiful period conversion, benefiting from its own private entrance.

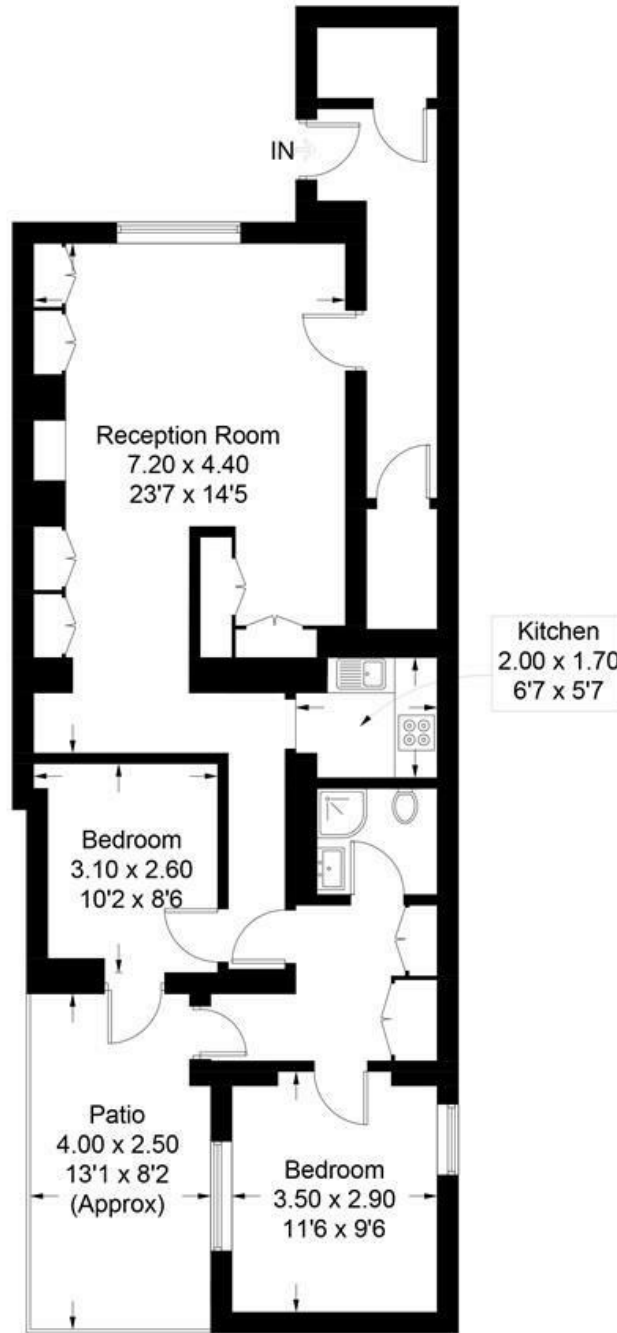
The property comprises a light-filled reception room, a modern compact fitted kitchen, and two bedrooms, both with direct access to a private decked patio area. Ample storage space throughout.

Ideally located just a 4-minute walk from Lancaster Gate Station and the open green spaces of Hyde Park, with Paddington Station also within easy reach, offering excellent transport links.

Available to move in soon.

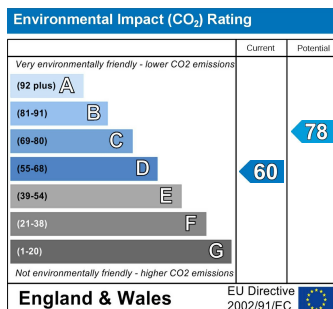
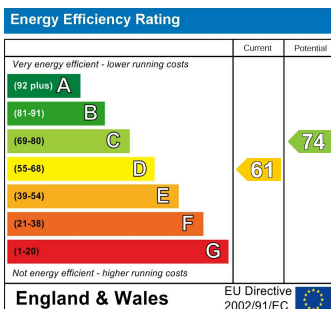
Gloucester Terrace, W2

Approximate Gross Internal Area = 77.8 sq m / 837 sq ft



Lower Ground Floor

Illustration for identification purposes only, measurements are approximate, not to scale. floorplansUsketch.com © (ID522925)



TENURE

Leasehold: 140 years remaining
SC & GR: £2052 p.a. approx